

The background of the slide features a large, faint watermark of the Rutgers University crest, which is a stylized archway with a series of circular openings and decorative flourishes.

# RUTGERS

School of Arts and Sciences

## Joomla!

Compare Joomla3 to Joomla 4

# Class Agenda

- Joomla Overview
- What is new in Joomla4
- Review new Template Design
- Review Joomla4 Back End
- Review Migration Process

# Getting started – Training Site

Sample site we will be working with for all future classes:

- Go to the website:
- <https://webtraining.sas.rutgers.edu>

# What is Joomla?

- Content Management System (CMS) software
- Runs on a web server and allows you to update your web site through a browser (such as Google Chrome, Mozilla Firefox, or Safari)
- Simplifies the process of updating a website by eliminating the need to edit HTML or use web design software
- Official website: <https://www.joomla.org/>

# What is New in Joomla4

## Joomla History

- Joomla 1.0 2009
- Joomla 1.5 2012
- Joomla 2.5 2014
- Joomla 3.x 2013 (parallel with Joomla 2.5)
- Joomla 4.x 2021
- Joomla 3.x end of life à August 2023

# What is New in Joomla4

- Bootstrap 5 Integration
- More friendly Back-end UI
- Coding improvements
- New front-end template and back-end template
- New Media manager
- Simplified installation process
- Faster page loading times
- Features to improve SEO

# New Template Design

## Design Elements created by R-Comm

- Central marketing and communications department serving the Rutgers-New Brunswick and RBHS communities.

Sample Site:

<https://diversity.rutgers.edu>

# Current Site

School of Arts and Sciences Support SAS Search Rutgers Rutgers Home

Search ...

**RUTGERS**  
School of Arts and Sciences

SAS IT Services  
Training Website

HOME ABOUT INTRO TO JOOMLA! ACCESSIBILITY MODULES FACULTY NEWS TESTIMONIALS



**Welcome**

**Welcome to SAS Training**



**UPCOMING EVENTS**

No events

[Subscribe to RSS Feed](#)

Libero parturient vehicula mauris habitasse primis nisi curae, commodo fames at, dolor est laoreet ultricies dapibus sit. Nec. Hac hymenaeos placerat nullam Molestie netus etiam pharetra vivamus natoque praesent maecenas. Adipiscing nulla taciti varius nisi orci volutpat sociis Turpis lectus porta aenean In turpis scelerisque luctus morbi tristisque ridiculus lectus quisque vulputate hac egestas per sodales ultrices quisque. Aptent. Dictumst fringilla. Integer ac venenatis orci.

Curabitur nec nibh ut lectus gravida efficitur non a duī. Quisque dignissim pellentesque velit, non vehicula ipsum rutrum at. Nullam sit amet urna mi. Aenean pharetra augue elit, a vehicula eros molestie et. Nunc sagittis sem vehicula nibh efficitur vulputate. Integer



## New Site

**RUTGERS** School of Arts and Sciences  
**SAS Web Training**

Home | [About Us](#) | [Academics](#) | [People](#) | [News](#) | [Contact Us](#)

### SAS Web Training

Lorem ipsum dolor sit amet, consectetur adipiscing elit. Nulla vulputate sit amet tellus quis laoreet. Ut ac neque id arcu tincidunt condimentum sit amet accumsan erat. Mauris dignissim ex at finibus maximus. Phasellus vel urna ante. Etiam porttitor commodo neque vel fementum. Ut congue lorem nec pharetra euismod.

[Read More](#)

**About the SAS CMS**

**Join our Mailing List**

**Get Support**

### New and Noteworthy

**Climate is changing**

Small amount of time, computer simulation, and...  
 Researchers in...  
 ...  
 ...

**Collaborate with other students**

...  
 ...  
 ...

**Fantastic Conference**

...  
 ...  
 ...

**Student Research**

...  
 ...  
 ...

**RUTGERS** School of Arts and Sciences

[Home](#) | [About Us](#) | [Academics](#) | [People](#) | [News](#) | [Contact Us](#)

[Facebook](#) | [Twitter](#) | [LinkedIn](#)

[Sitemap](#) | [Site Feedback](#) | [Login](#)

Rutgers is an equal opportunity institution. Individuals with disabilities are encouraged to contact us regarding accessibility. For more information, please contact the Office of Access and Disability Services.

# Top of Page



- Department Name --> Top right side
- Page title for HOME PAGE --> displayed in red banner under slider
- Menu top right side
- No longer a HOME menu item (click on top left logo / name) will take you back to home page

# Middle of Page



Lorem ipsum dolor sit amet, consectetur adipiscing elit. Nulla vulputate sit amet tellus quis laoreet. Ut ac neque id arcu tincidunt condimentum sit amet accumsan erat. Mauris dignissim ex at finibus maximus. Phasellus vel urna ante. Etiam porttitor commodo neque vel fermentum. Ut congue lorem nec pharetra eleifend.

[Read More](#)

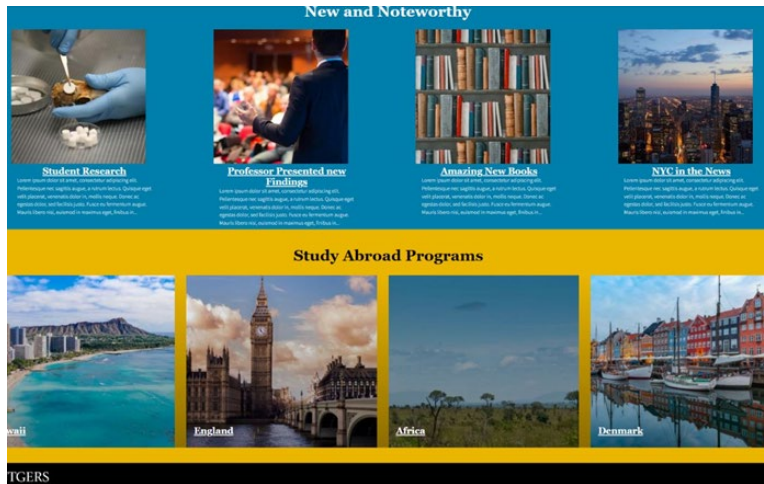
- Welcome Square will be at least 400 x 400
- Text will display larger to the right of the square
- Link will go to an 'about us page', which can tell more about your unit
- This is managed in custom fields
- HOME PAGE à There is NO right sidebar

# Bottom Modules / Abilities



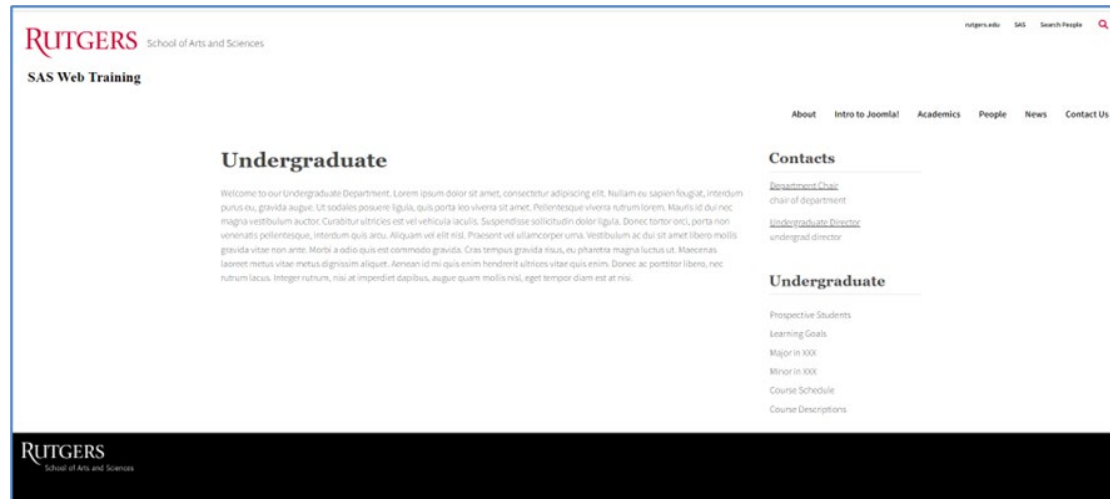
- These sections work similarly to what we had before in mainbottom and extension. We will move many of the 'custom images' to these rows. They will have a white background, and will be the width of the interior page.

# Sas-extension area



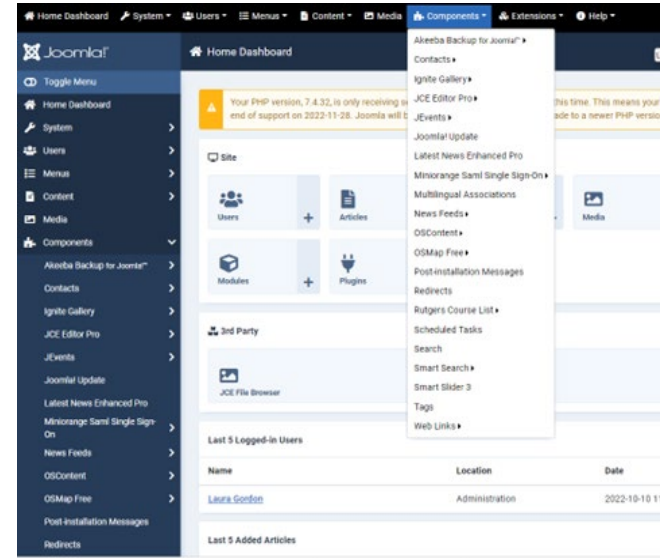
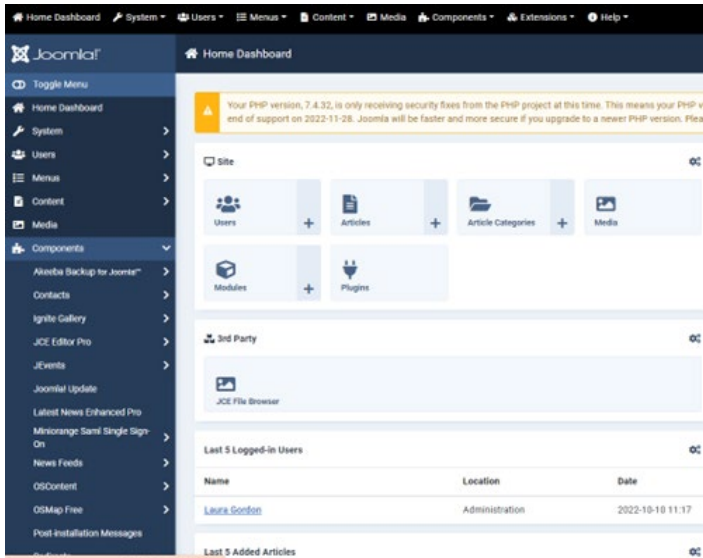
- This area takes the full width of the page. It can have different background colors such as:
- Teal, blue, gold, Rutgers Red, Black
- This area works great for Latest News Enhanced modules where you want to display horizontally images with links and/or text.

# Sample Interior Page



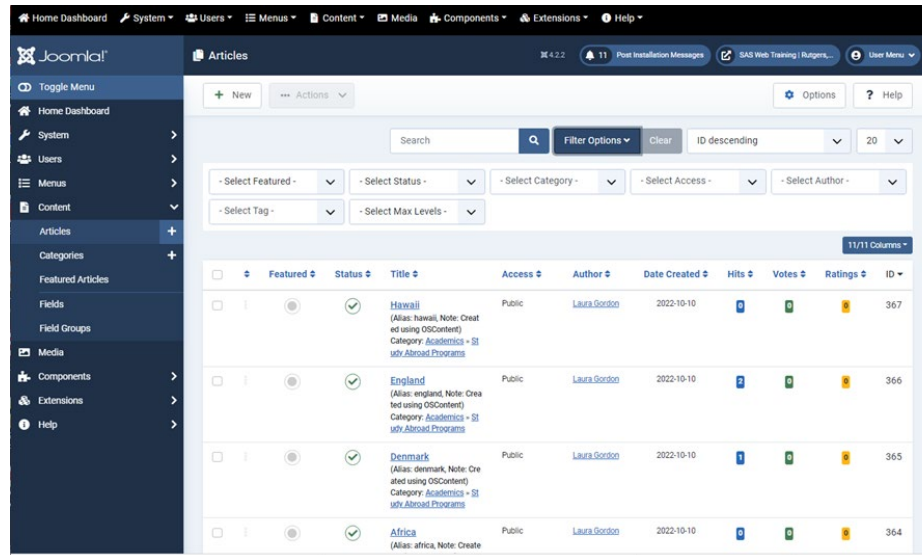
- The right side module is called: sidebar-right
- It can display multiple modules, similar to the other template

# Review Joomla4 Back End



- The functionality in Joomla4 on the back end is essentially the same as in Joomla3, except the view is different. The main 'top menu' is on the TOP and on the SIDE. It is much faster now to navigate through the side navigation, as the entire page does not need to refresh.

# Working with Articles / Content



- Click on content --> Articles you can then see all of the articles on the site
- Click on filter options to see other ways of viewing content
- Type the article name in the search to find an article



# How will our Migrations Work?

- Our goal is to have all sites migrated to Joomla4 and the new template by August 2023. We have an aggressive schedule to get this complete.
- We will be migrating sites that have already been moved to the Cloud.
- We will let your department know once we are going to begin.
- We will lock up your site for editing while we are doing the migration.
- If you have edits, you can let us know via work orders, or preferably wait until the migration is complete
- Our goal is for the migrations to take up to 1 week – 2 weeks to migrate.
- Our focus will be to adjust your home page to meet the criteria of the new template. Interior pages will keep the same structure and flow as they currently have.